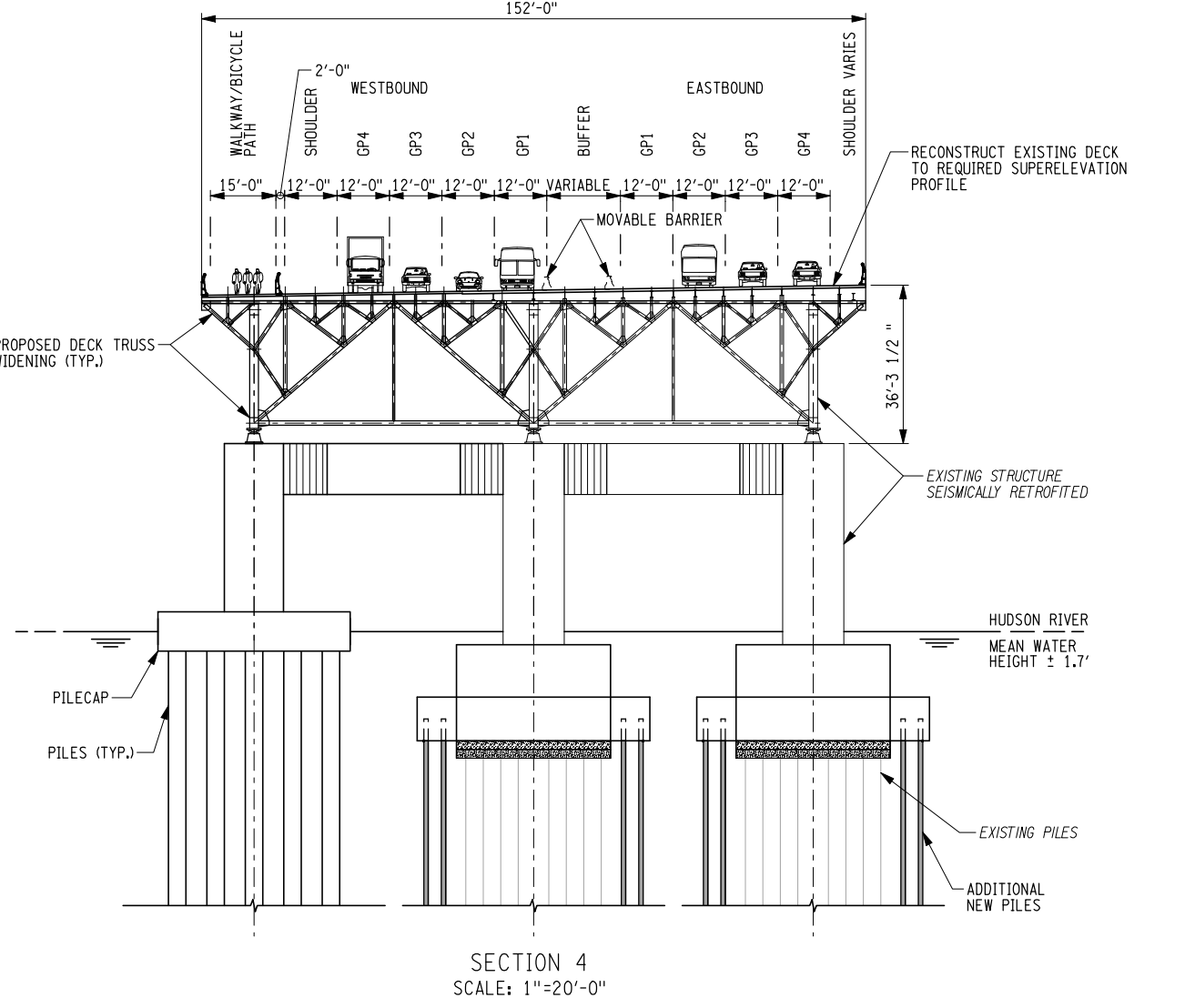
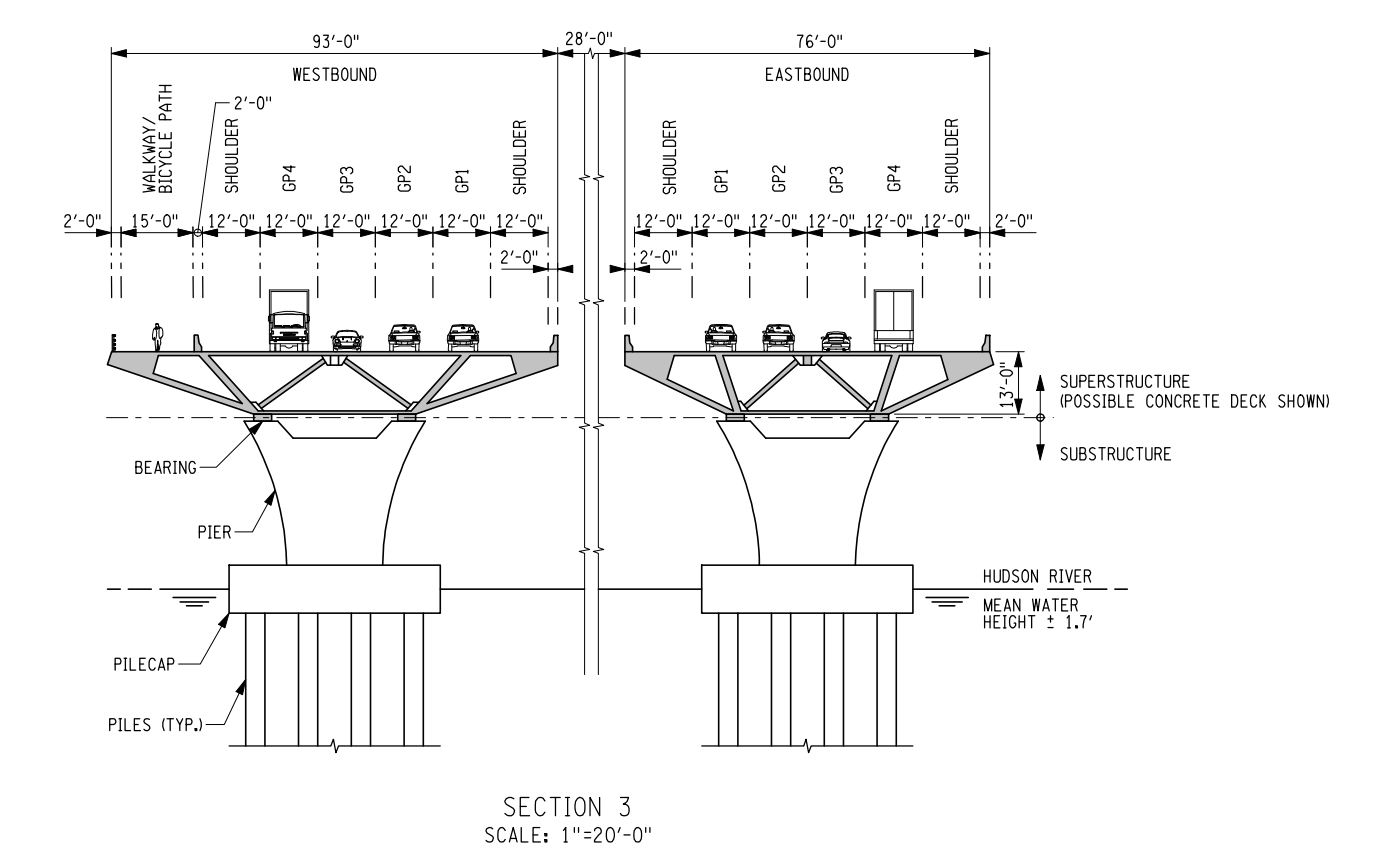
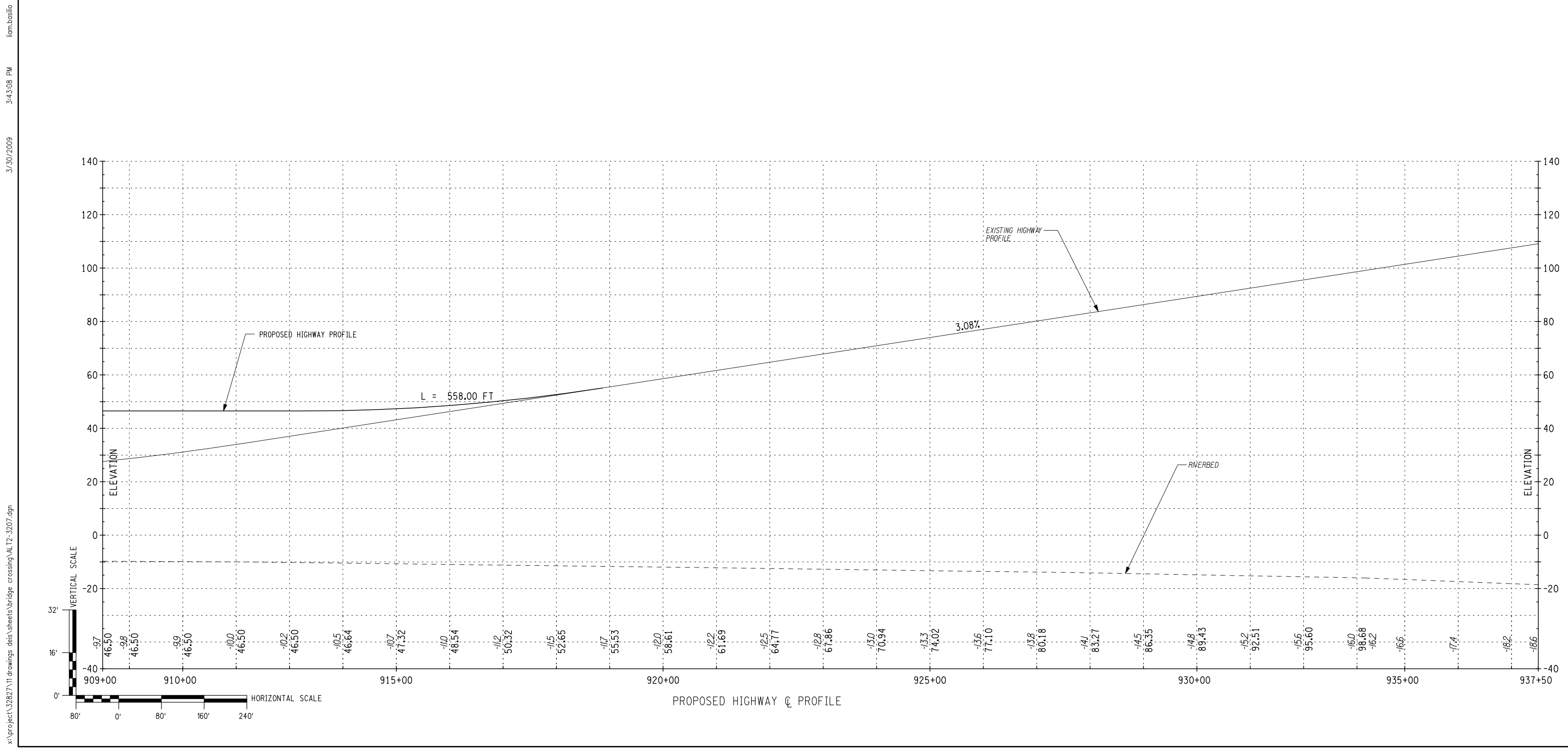


LEGEND

- (30) BENT NUMBERS PROPOSED STRUCTURE
- (85) BENT NUMBERS EXISTING STRUCTURE
- 45.20 PROPOSED ELEVATION
- 40.52 EXISTING ELEVATION
- MOVABLE BARRIER AM POSITION
- MOVABLE BARRIER PM POSITION

SEE ALT-2-3112



REV	DATE	DESCRIPTION	BY

TAPPAN ZEE BRIDGE / I-287 CORRIDOR PROJECT

ARUP AS A DIVISION OF THE ARUP GROUP LIMITED

REHABILITATION OPTION 1
 EXIST. BRIDGE W/ NEW CAUSEWAY CAUSEWAY TRANSITION (1 OF 2)
 BRIDGE CROSSING PLAN

New York State Department of Transportation
 Thruway Authority
 Metro-North Railroad

PROJECT NUMBER: 0213124 DATE: MAR 2009 SHEET NUMBER: ALT-2-3207