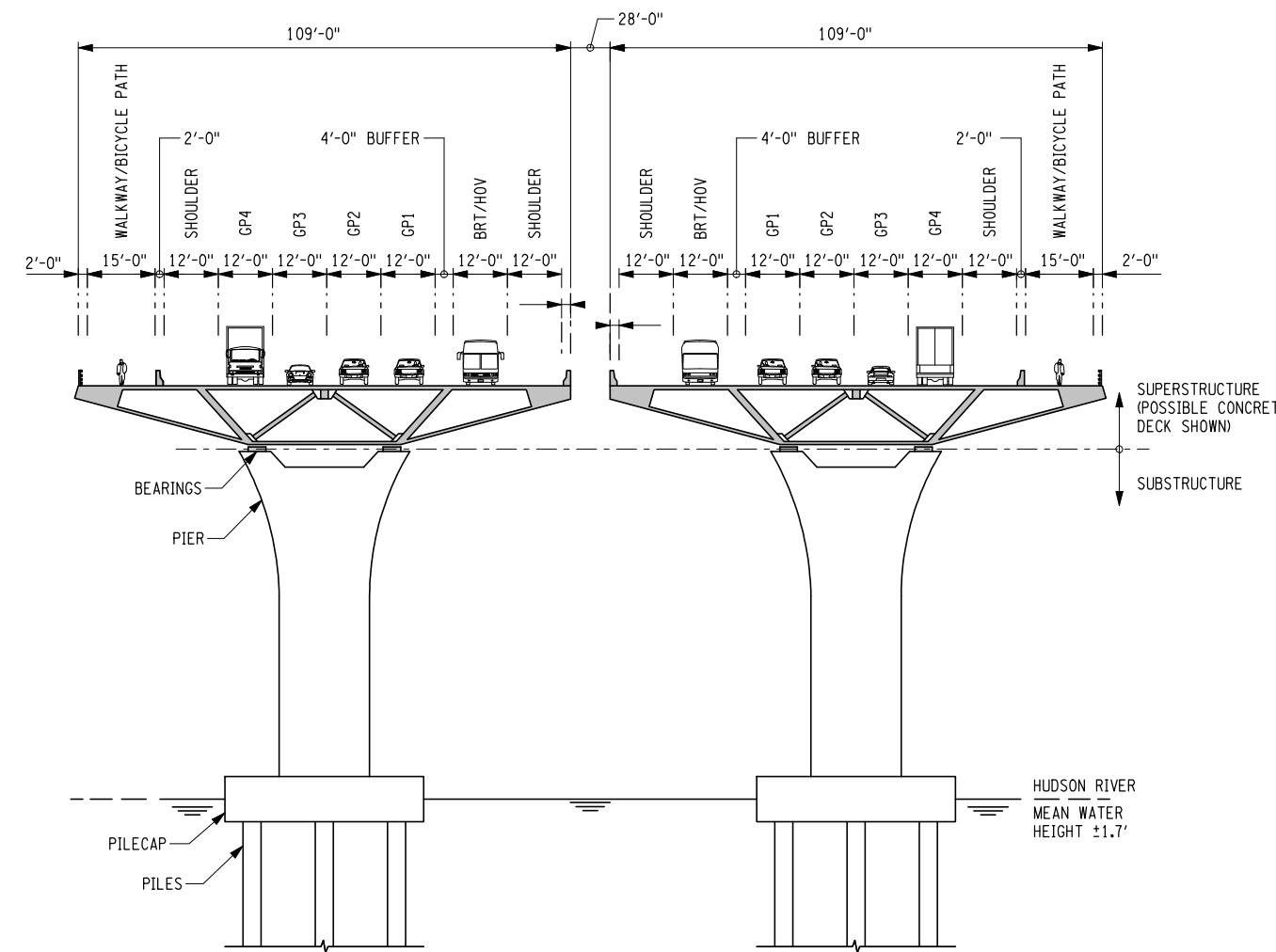
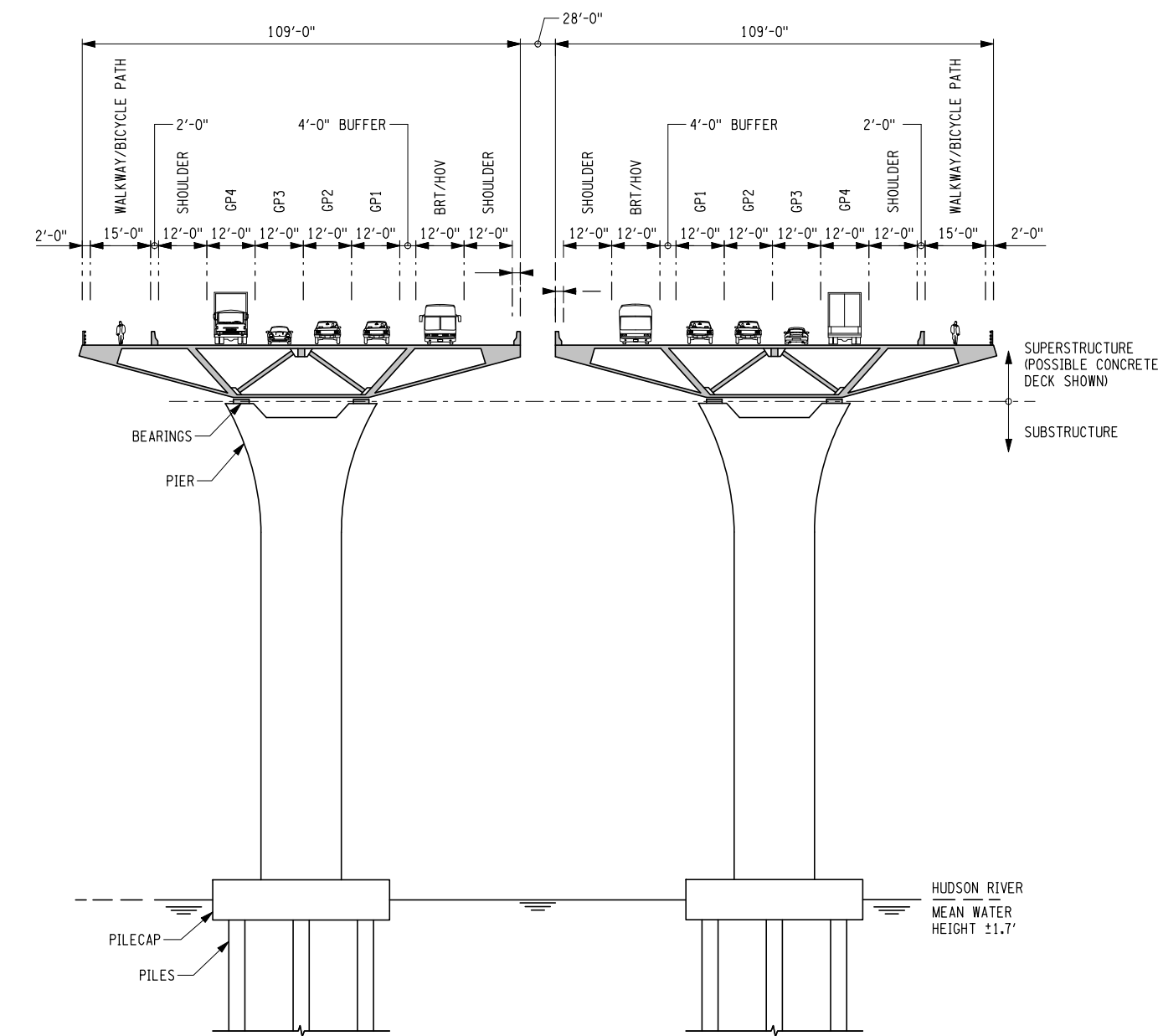


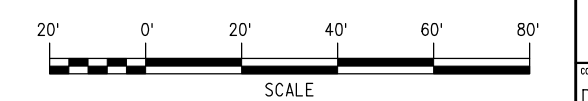
SECTION 2 AT STA. 849+00
SCALE: 1"=20'-0"



SECTION 3 AT STA. 856+00
SCALE: 1"=20'-0"



SECTION 4 AT STA. 954+28
SCALE: 1"=20'-0"

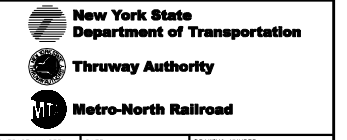


REV	DATE	DESCRIPTION	BY
REVISIONS			

TAPPAN ZEE BRIDGE / I-287
CORRIDOR PROJECT

ARUP AS AFFILIATE OF THE ARUP GROUP
100 FIFTH AVENUE
NEW YORK, NY 10011
TEL: 212 512 2000

REPLACEMENT
OPTION 1 - 2 SINGLE DECKS
HIGHWAY WITH BRT/HOV
SECTIONS (SHEET 1 OF 2)
BRIDGE CROSSING PLAN



PROJECT NUMBER: 0213124 DATE: MAR 2009 DRAWING NUMBER: AL13-3250